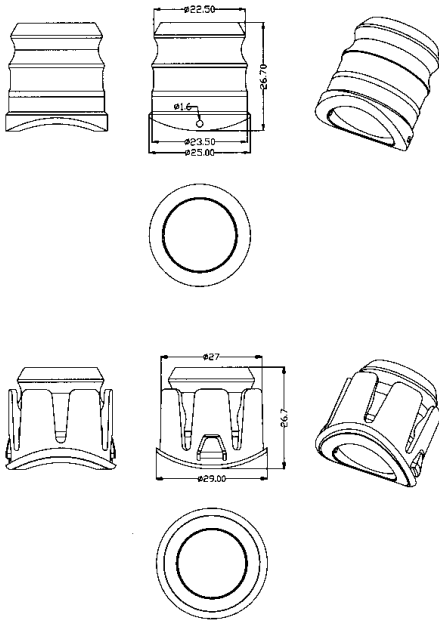


# HANDRAIL LIGHT

## TO-HRL-0130



Luminous Flux (lm):	140
Colour Temperature/s (K):	3000
Power Consumption (W):	1.6
Voltage (V):	24 VDC
DC Drive Current (I):	n/a
Beam Angle (°):	60° Diffused
Colour/Finish:	Polished 316 Stainless Steel
Applications:	Suitable for handrail diameters of 48-63mm with a wall thickness of 1-1.5mm
Features:	Compact, tamperproof design.
Lamp Type:	CREE LED
Lifespan (hrs):	30,000
Fixture Size:	25mm dia. (27mm with mounting shroud) x 26.7mm deep
CRI:	>80
IP Rating:	67
Mounting:	27mm Hole



Phone +61 2 9098 8999  
Email [info@thelightingguild.org](mailto:info@thelightingguild.org)  
Visit [www.thelightingguild.org](http://www.thelightingguild.org)  
PO Box 6209 West Gosford NSW 2250 Australia